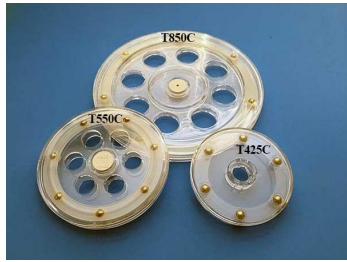


TURN TABLES



4-1/4", 5-1/2", 8-1/2" CLEAR



4-1/4", 5-1/2", 8-1/2" BLACK



4-1/4", 5-1/2", 8-1/2" WHITE

These smooth turning and nice-looking Turn-Tables are made from styrene and use steel bearings. A creative choice for jewelry, sport, pastry displays and others that benefit from a rotating feature. Styrene is a strong material that will glue to acrylic using standard acrylic solvents.

All 5-1/2" and 8-1/2" Turn-Tables are full diameter rotation and support approximately 12 Lb. The 4-1/4" Turn-Tables are full diameter rotation and handle approximately 4 Lb. (depending on size and application)

Part No.	Description	Each	50	100	500
T425C	4 1/4" CLEAR				
T425B	4 1/4" BLACK				
T425W	4 1/4" WHITE				

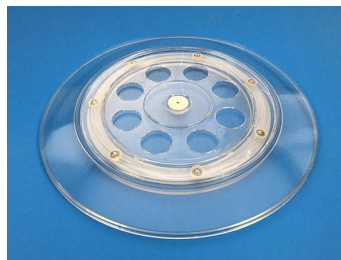
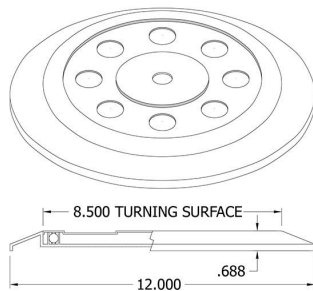
Case pack: 100 PCs. • Dimensions: 4-1/4" x 9/16" • Material: Styrene

Part No.	Description	Each	50	100	500
T550C	5 1/2" CLEAR				
T550B	5 1/2" BLACK				
T550W	5 1/2" WHITE				

Case pack: 50 PCs. • Dimensions: 5-1/2" x 9/16" • Material: Styrene

Part No.	Description	Each	50	100	500
T850C	8 1/2" CLEAR				
T850B	8 1/2" BLACK				
T850W	8 1/2" WHITE				

Case pack: 50 PCs. • Dimensions: 8-1/2" x 9/16" • Material: Styrene



12" x 8-1/2" Clear Only

T1285C 12" Turn-Tables are 8.5" rotation with a 12" base, and support approximately 20 lbs. (depending on size and application) Available in Clear Only

Part No.	Description	Each	25	100	500
T1285C	12"x8 1/2" CLEAR				

Case pack: 25 PCs. • Dimensions: 12" x 5/8" • Material: Styrene